

# Siena II

4 Bedroom 2.5 Bath, Family Room,  
2 Car Garage  
A/C Sq. Ft. 2,190 Total Sq. Ft. 2,702

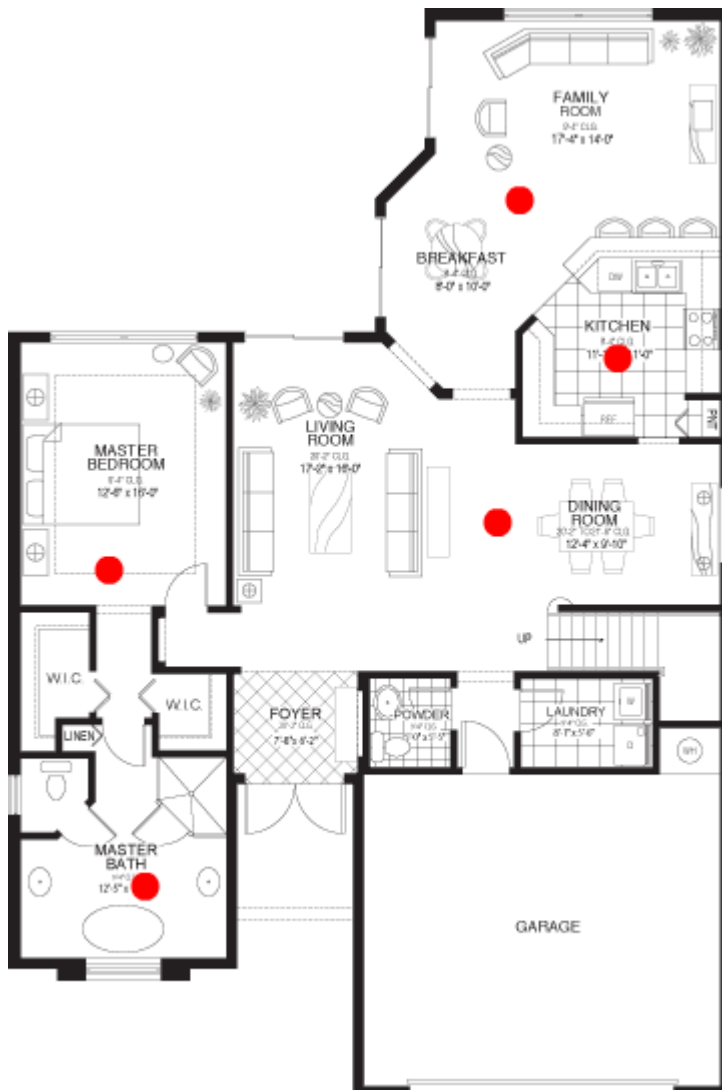


To see the virtual reality tour, click on the **red dots** which will appear when you put the cursor over the plans.

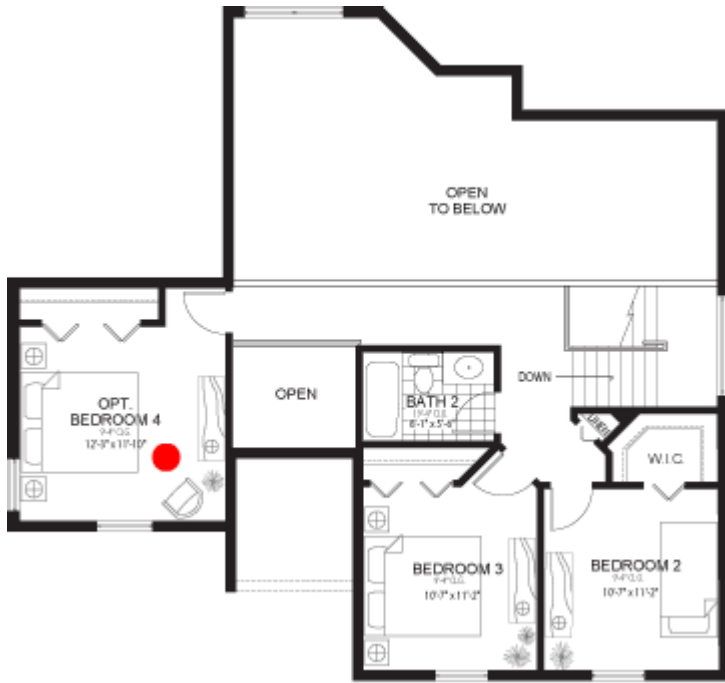
[Back](#)

[Print](#)

## First Floor



## Second Floor



[Back](#)

[Print](#) 

---

**Corporate address: 5555 Anglers Avenue, Ft. Lauderdale, Florida 33312  
1 (888) PORTOFINO - 1 (888) 767-8634**

All rights reserved. Lic. #CG CO53496. Prices, terms and features are subject to change without notice.  
Use of this site is subject to Prime Homebuilders [TERMS OF USE](#) Please Review this link for terms of use

Copyright © 2005 Prime Home Builders an Abbo Group of Companies. All rights reserved.